



JUNCTION BOXES

Dynapak

IP44-IK08

Class 2

Patented components



ADVANTAGES

Movable terminal block support with two-level height-positioning for easy connection and rapid maintenance on site.

High transparent cover to view and access protections. Central locking by ¼ turn captive screw.

Fixing bracket, adjustable without tools over 110mm, with front or rear hooking.

TECHNICAL CHARACTERISTICS

Max capacity

- Up to 2 network cables, 4x25mm².
- Up to 3 network cables, 5G16mm².
- Up to 2 lighting fixture cables, 3G2.5mm².

Casing

- Self-extinguishing polycarbonate.
- IP44 in accordance with IEC 60529 (open junction box: IP2X).
- IK08 in accordance with EN 62262.
- Class 2.
- -40°C to +130°C.

Product standards

- EN 61439-2.

Even more flexibility and ease of installation on new Dynapak for posts with a min. inside diameter of 84mm.

The Dynapak can connect up to 2 x 25mm² network cables or 3 x 16mm² network cables and 2 lighting fixture cable outputs.

Integration of devices such as ADD protection, ST2, remote management, etc.

Open sides and stiffened back to facilitate connection.

Low cover easily fitted for secure maintenance of the protections.

Protective flexible cone, for the frontal insertion of power cables.



DPB

DPH

Available in 2 versions:
with lamp output via the bottom (DPB) or the top (DPH).

Installation standards

- NF C17-200 and associated guides.

Standard colour:



- Other colours: please consult us.

Mounting:

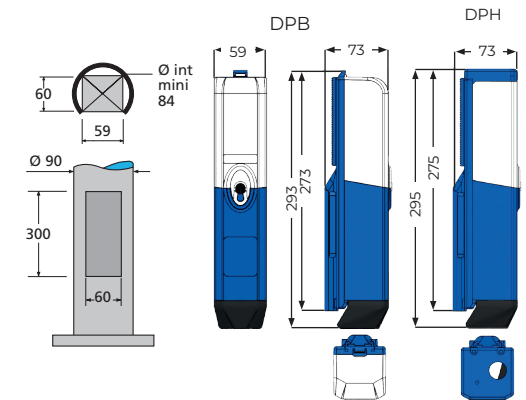
- Fixing bracket 1 or 2 hooks.
- Possible vertical rail mounting with M6 screws.

Optional:

- Terminal block: marking of the terminals to facilitate maintenance.

Delivery:

- Pre-wired with high-temperature silicone coated wires and crimped lugs.
- Supplied with fuses, configuration labels and cable clamp.



DPB

DPH

DPB

DPH

DPB

DPH

DPB

DPH

DPB

DPH

DPB

DPH

DPB

DPH

DPB

DPH

DPB

DPH

DPB

DPH

DPB

DPH

DPB

DPH

DPB

DPH

DPB

DPH

DPB

DPH

DPB

DPH

DPB

DPH

DPB

DPH

DPB

DPH

DPB

DPH

DPB

DPH

DPB

DPH

DPB

DPH

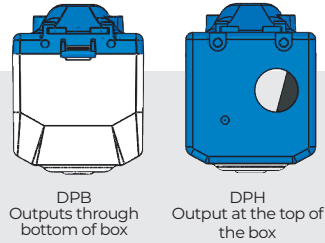
DPB

DPH

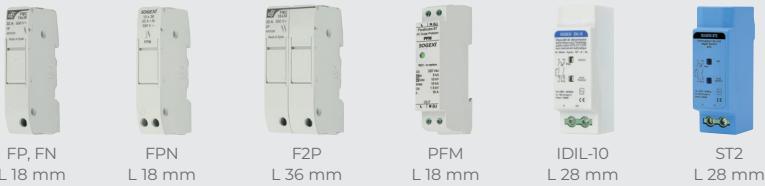
Sogexi® Lamppost base junction boxes > Dynapak

LIGHTING FIXTURE OUTPUT CABLES

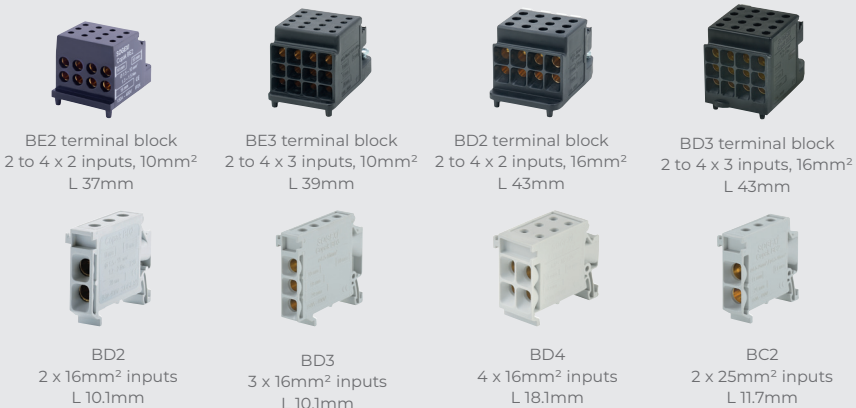
Via the bottom (DPB) or via the top (DPH).



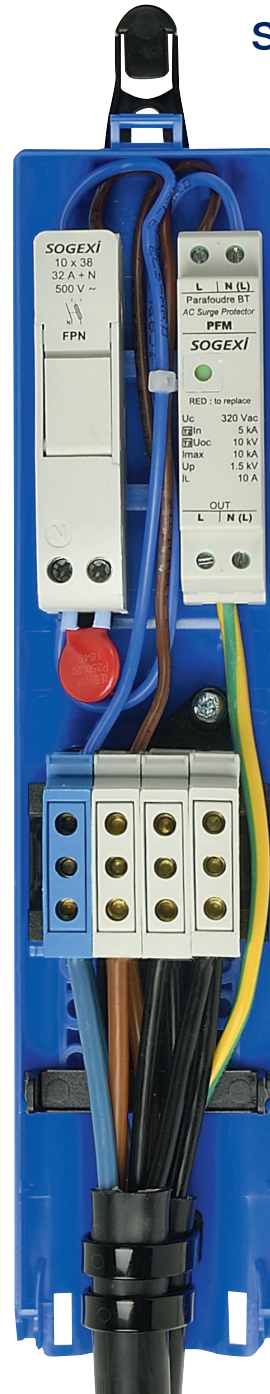
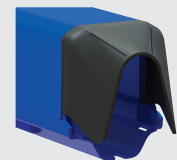
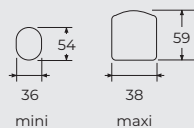
PROTECTIONS & DEVICES - Max volume available (mm): 54L x 48D x 86H



CONNECTION - Integrated terminal blocks



NETWORK CABLES



LIGHTING FIXTURE OUTPUT CABLES - Main configurations

	Standard	Options	
		TET	Cable glands
Via the bottom (DPB)	2 cables (7 to 14mm)	-	-
Via the top (DPH)	1 cable (7 to 10mm - TET 7/10)	2 cables (7 to 10mm - 2xTET 7/10)	2 cables (6 to 12mm - 2xM20)
		2 cables (10 to 14mm - 2xTET 10/14)	1 cable (9 to 17mm - 1xM25)

PROTECTIONS & DEVICES - Max combinations

		∅	PFM L 18mm	IDIL L 28mm	ST2 L 28mm
FP ou FN	L 18mm	1FP + 1FN	(FP + FN) + 1PFM**	-	-
FPN	L 18mm	3FPN**	2FPN + 1PFM**	1FPN + 1IDIL	1FPN + 1ST2
F2P	L 36mm	1F2P	1F2P + 1PFM**	-	-

Usable width of the protection zone: 54mm.

CONNECTION - Main max configurations

	≤ 16mm ²	≤ 25mm ²
2 network cables	4BD2 terminal block max or 5 BD2 terminals max	4 BC2 terminals max
3 network cables	4BD3 terminal block max or 5 BD3 terminals max	-

Usable width of the connection zone: 54mm.

NETWORK CABLES - Main max configurations

	4X 10mm ²	5G 10mm ²	4X 16mm ²	5G 16mm ²	4X 25mm ²	5G 25mm ²	Lighting fixture cables
2 cables*	-	1
2 cables*	-	2
3 cables**	-	-	1
3 cables**	-	-	2

(*) With lighting fixture cable 3G1.5mm² rigid max.

(**) Limit configurations: tight wiring.