



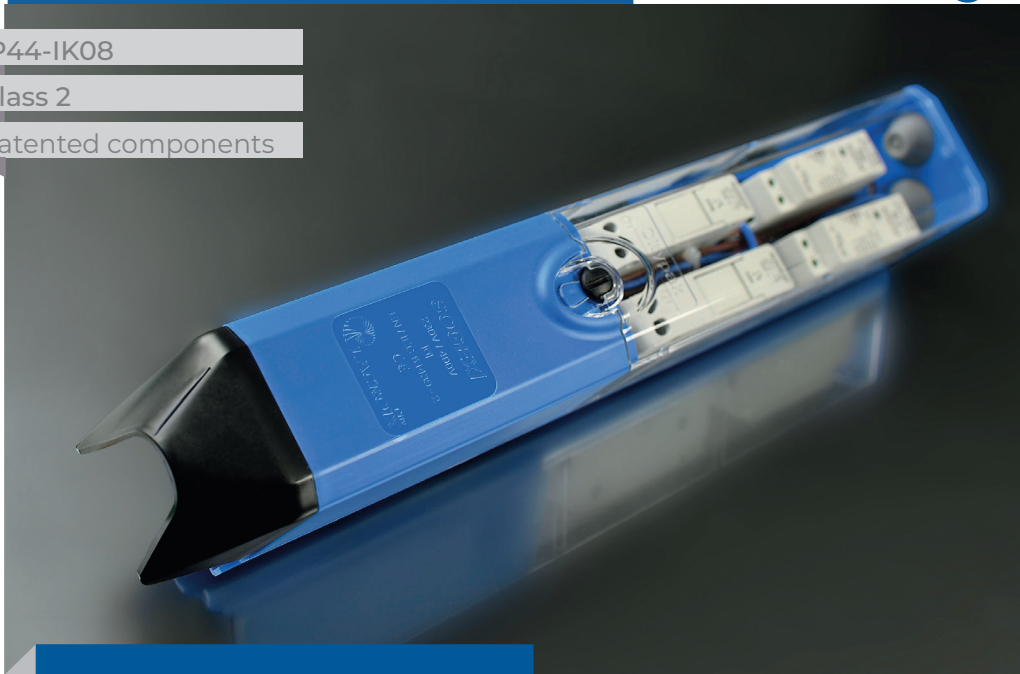
JUNCTION BOXES

IP44-IK08

Class 2

Patented components

Citypak



ADVANTAGES

Three stages: the highest enclosing capacity on small posts market.

Long high transparent cover to view and access protections. Central locking by ¼ turn captive screw.

Fixing bracket, adjustable without tools over 170mm, with rear hooking.

TECHNICAL CHARACTERISTICS

Max capacity

- Up to 2 network cables, 4x25mm².
- Up to 3 network cables, 5G16mm².
- Up to 2 lighting fixture cables, 3G2.5mm².

Casing

- Self-extinguishing polycarbonate.
- IP44 in accordance with IEC 60529 (open junction box: IP2X).
- IK08 in accordance with EN 62262.
- Class 2.
- -40°C to +130°C.

Product standards

- EN 61439-2.
- Installation standards
- NF C17-200 and associated guides.

The lamppost junction box entirely dedicated to smart lighting for posts with a min. inside diameter of 84mm.

The Citypak can connect up to 2 x 25mm² network cables or 3 x 16mm² network cables and 2 lighting fixture cable outputs.

Up to 4 simultaneous functions (connecting, protecting, managing and detecting): modularity and scalability at the service of smart lighting.

Open sides and stiffened back to facilitate connection.

Low cover easily fitted for secure maintenance of the protections.

Protective flexible cone, for the frontal insertion of power cables.



Standard colour:

- Other colours: please consult us.

Mounting:

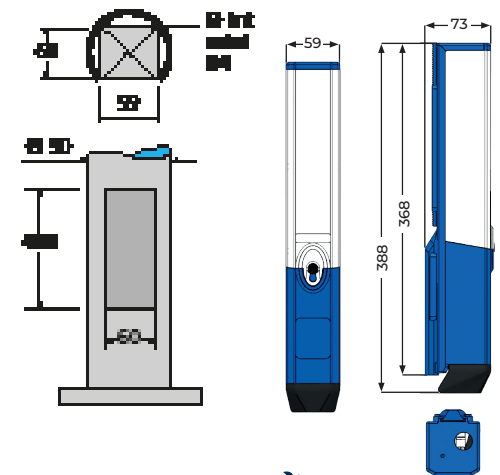
- Fixing bracket 1 hook.
- Possible vertical rail mounting with M6 screws.

Optional:

- Terminal block: marking of the terminals to facilitate maintenance.

Delivery:

- Pre-wired with high-temperature silicone coated wires and crimped lugs.
- Supplied with fuses, configuration labels and cable clamp.



LIGHTING FIXTURE OUTPUT CABLES

Via the bottom or via the top (standard).



PROTECTIONS & DEVICES - Max volume available (mm): 54L x 48D x 86H



FP, FN, FPN
L 18 mm



F2P
L 36 mm



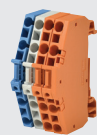
PFM
L 18 mm



IDIL-10
L 28 mm



ST2
L 28 mm



4R4
L 23 mm

CONNECTION - Integrated terminal blocks



BE2 terminal block
2 to 4 x 2 inputs,
10mm² L 37mm



BE3 terminal block
2 to 4 x 3 inputs,
10mm² L 39mm



BD2 terminal block
2 to 4 x 2 inputs,
16mm² L 43mm



BD3 terminal block
2 to 4 x 3 inputs,
16mm² L 43mm



BD2
2 x 16mm² inputs
L 10.1mm



BD3
3 x 16mm² inputs
L 10.1mm

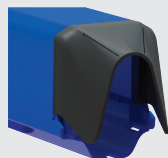
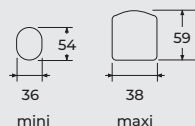


BD4
4 x 16mm² inputs
L 18.1mm



BC2
2 x 25mm² inputs
L 11.7mm

NETWORK CABLES



Sogexi® Lamppost base junction boxes > Citypak

LIGHTING FIXTURE OUTPUT CABLES - Main configurations

	Standard	Options	
		TET	Cable glands
Via the bottom	2 cables (7 to 14mm)	-	-
Via the top	1 cable (7 to 10mm - TET 7/10)	2 cables (7 to 10mm - 2xTET 7/10)	2 cables (6 to 12mm - 2xM20)
		2 cables (10 to 14mm - 2xTET 10/14)	1 cable (9 to 17mm - 1xM25)

PROTECTIONS & DEVICES - Max combinations

		Ø	PFM L 18mm	IDIL L 28mm	ST2 L 28mm
FP ou FN	L 18mm	1FP + 1FN	(FP + FN) + 1PFM**	-	-
FPN	L 18mm	3FPN**	2FPN + 1PFM**	1FPN + 1IDIL	1FPN + 1ST2
F2P	L 36mm	1F2P	1F2P + 1PFM**	-	-

Usable width of the protection zone: 54mm.

INTERMEDIATE ZONE - Max combinations

		Ø	PFM L 18mm	IDIL L 28mm	ST2 L 28mm
FP ou FN	L 18mm	1FP + 1FN	(FP + FN) + 1PFM**	-	-
FPN	L 18mm	3FPN**	2FPN + 1PFM**	1FPN + 1IDIL	1FPN + 1ST2
F2P	L 36mm	1F2P	1F2P + 1PFM**	-	-

Usable width of the protection zone: 54mm.

CONNECTION - Main max configurations

	≤ 16mm ²	≤ 25mm ²
2 network cables	4BD2 terminal block max or 5 BD2 terminals max	4 BC2 terminals max
3 network cables	4BD3 terminal block max or 5 BD3 terminals max	-

Usable width of the connection zone: 54mm.

NETWORK CABLES - Main max configurations

	4X 10mm ²	5G 10mm ²	4X 16mm ²	5G 16mm ²	4X 25mm ²	5G 25mm ²	Lighting fixture cables
2 cables*	-	1
2 cables*	-	2
3 cables**	-	-	1
3 cables**	-	-	2

(*) With lighting fixture cable 3G1.5mm² rigid max.

(**) Limit configurations: tight wiring.